

24V operators for sliding gates, for very intensive use; extremely simple to install and completely safe to use thanks to full compliance with the current European standards.

The D-Track torque control system together with the virtual encoder ensure maximum precision in the control of leaf movement and the detection of obstacles.

Code	
P926183 00002	ARES 1000
P926183 00004	ARES 1000 PROX
P926183 00003	ARES 1000 V
P926183 00001	ARES 1000 120
P926182 00002	ARES 1500
P926182 00004	ARES 1500 PROX
P926182 00003	ARES 1500 V
P926182 00001	ARES 1500 120
R925273 00001	KIT ARES 1000



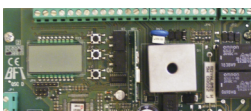
## PLUS



Monoblock gear motor structure guaranteeing maximum resistance and performance in any installation conditions



Proximity limit switches for accurate, safe installations in any environmental conditions.

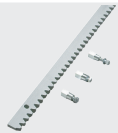


Control unit with programming display and D-Track torque, speed and position management and control system in 24V versions. Incorporated dual channel radio receiver

## Technical features

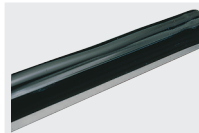
	ARES 1000	ARES 1500	ARES 1500 120
Control unit	HQSC-D ARES		
Power supply	24 V	24 V	120 V
Power input	240 W	400 W	400 W
Pinion module	4	4	4
Slowdown	yes	yes	yes
Impact reaction	d-track	d-track	d-track
Locking	mechanical	mechanical	mechanical
Release	knob operated with personal key	knob operated with personal key	knob operated with personal key
Frequency of use	intensive	intensive	intensive
Environmental conditions	from -15 °C to 60 °C		
Actuator weight	7 kg	7 kg	7 kg

## ACCESSORIES



### CVZ - D571053

Steel rack, 4-module, cross-section 30 x 12 mm, length 1 m, screw-fitted on supports (supplied)



### BIR C - N190104

Rubber safety edge (H 30 mm), price per m



### SFI - N999156

Base plate for ARES and ICARO (supplied with operator)



### THEKE B PRA 01 - P125018

Metal protection box for ARES and ICARO series sliding operators



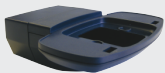
### RADIUS B LTA 230 R2 - D113749 00002

Flashing light without incorporated antenna for motors with power supply 230 V. Flashing beacon without built-in antenna for 230V motors



### RADIUS B LTA 230 R1 - D113748 00002

Flashing light with incorporated antenna for motors with power supply 230 V. Flashing beacon with built-in antenna for 230V motors



### B 00 R02 - P123025

Wall mounting for B LTA series flashing beacons



### Mitto B Rcb02 R1 - D111904

Transmitter with channels. Range . Power supply with 1 battery type 23 A



### Q.BO TOUCH - P121024

Wireless digital touch button panel 433Mhz rolling code.



### Q.BO KEY WM - P121022

Key selector for outdoor use with double contact.



### DESME A15 - P111526

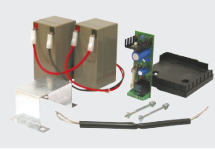
Pair of self-aligning photocells. Range 30 m. Power supply 24 V ac/dc. Pair of self-aligning photocells. Range 30 m. Power supply 24 V ac/dc.



### PHP - P903018

Pair of aluminium posts for THEA/DESME photocells

## ACCESSORIES



**BT BAT2 - P125009**  
Set of backup batteries for ARES



**CMS - D831081**  
Sign